

6.3 THE DELIVERY OF PARCEL MAIL - Germany and France

Parcels were carried in heavy boxes fitted to the back or front of tricycles at the end of the nineteenth century.



Above: Loading parcels on train to tricycles 1897.
Below: Service in Paris used by chemists, hence a *serpent and a tricycle wheel* in design of label.

La Société des Messagers Nationaux formed in Paris on 1 Sept 1890 had subsidiary La Société des Colis Postaux de Paris pour Paris which delivered parcels by tricycle, until replaced by horses 1 Jan 1891. Below 3 part stationery: stamp, for parcel, receipt & comtierfoil.



MESSAGERS NATIONAUX

36 & 38, Rue du Louvre.

DATE : _____

125

Timbre-décharge du Messager.



23 Centimes

MESSAGERS NATIONAUX

36 & 38, Rue du Louvre.

DATE : _____

126

Timbre décharge du Messager.



23 Centimes



23 Centimes



23 Centimes

6.3 THE DELIVERY OF PARCEL MAIL

2, 3 and 5 wheeled cycles have been used to deliver parcels, with bags, baskets and boxes at front and behind.



Above:
A happy postman

Royal Mail Postcard



Trade cycles are difficult to ride, when full.



1880 tricycles used by postmen to deliver parcels in Vienna.



Centre Cycles or "Hen & Chickens" used by Post Office in Horsham area in 1882/3, proved to be impractical.



Left:
Should I sign for this, or not?

6.4 AUTHORISED LOCAL POSTS - "Corrieri di Citta" Milan 1897.

Company authorised to deliver unsealed printed matter, including newspapers and magazines, in City Centre.

Express delivery by CYCLISTS attracted a surcharge of 10c.



AUTHORISED LOCAL POSTS - Barcelona Postal Express 1904 - Approved by Postal Authorities.

enlargement of the handstamp on card.



Stamps suppressed but cyclist cachets continued



N.B. 30 different pin-ups on "stamps" but all depicting cyclist, at top left. The service started by Federico Gomila using cyclists.

VBC Série N° 3098

CARTE POSTALE

Tous les pays étrangers n'acceptent pas la correspondance au recto. Se renseigner à la poste.

Cartes Postales, Marque "GOMILA" Paris (Enregistrements Dépôt)

Correspondance

Adresse

Sciorrita
Arta Lomuel
Arudy 146 1/2 1/2
Tubuit

Right 1907 New Year's Card sent 31.12.1906

6.5 LOCAL POSTS - GOVERNMENT SERVICES DISORGANISED - Fresno and San Francisco 1894.

Reductions in Pullman workforce and employees' wages retained, led to boycott by American Railway Union.



Mail transport halted in San Joaquin Valley Arthur Banta arranged printing of stamps and relays of cyclists to deliver mail 816 stamps printed direct from the die in sheets of 6, BUT with mis-spelling of San Francisco. (NB errors on sheet above)



Left.

Copy of handstamp on back of envelope reduced in size.

Below: Error in spelling, on Cover; probably carried but there are no postal markings; cachets applied at Fresno.



6.5 LOCAL POSTS - GOVERNMENT SERVICE DISORGANISED - Fresno and San Francisco 1894.

Stamp reissued on 7 July 1894 with crude correction of San Francisco and addition of engraver's initials "E D"



New die used (see differences in foreground). Sheet is reprint on paper 62 mm high, produced 16 July 1894. Engravers initials "ED" (Eugene Donze) added below "B" of "Bicycle mail" in the thick line.

Right,
Copy of handstamp on back
of envelope reduced in size.



Below. Fresno to Fresno cover, used on July 18 1894, the last day of the Service. Estimated that brown Diamond stamp added to max. of 350 covers, with 2c. "Plympton" imprint.



6.5 LOCAL POSTS - GOVERNMENT SERVICE DISORGANISED - Coolgardie Cycle Express 1895.

1892 gold finds near Coolgardie led to huge population increase; W. Australia P.O. unable to provide mail service. James Healey and others provided a local cycle mail service between the various gold fields.



Quality of washing gold



James Healey produced two sets of stamps; the first was probably printed in 1895, not 1894 and consisted of two values printed in blue, in sheets of 35. Example next page. NB Error: right hand margin imperforate.



On route to deposit gold



Licence inspected.



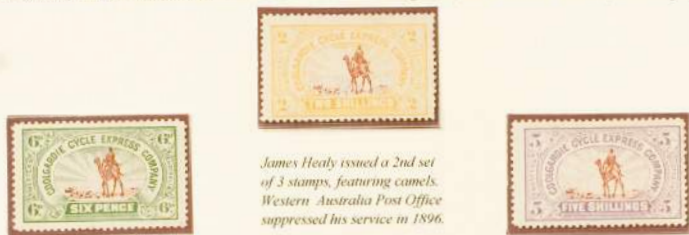
Puddling

Below. One of approx. 12 known covers. See main cancel "Per Coolgardie Cycle Express Co Hunt Street".

Note, at left, in the corner "per Cycle Express" and along the edge "Late of N.Z."



6.5 LOCAL POSTS - GOVERNMENT SERVICE DISORGANISED- **Coolgardie Cycle Express Co. 1896**
 The extension of the service to Lake Darlot, 450 kms from Coolgardie, led to use of camels, ridden by cyclists.



James Healy issued a 2nd set of 3 stamps, featuring camels. Western Australia Post Office suppressed his service in 1896.

At foot: Advertising Card used by James Healy

Lake Lefroy Goldfield Cycle Mail Service 1897

H.L. Hillier and F.E. Maskell began cycle mail service - Coolgardie to Lake Lefroy, approx 45 miles, in Feb 1897. Post Office objected to the word "Postage" on stamp. Service ceased in June 1897, when mail coach service started

1,000 6d stamps printed in April, at offices of the "Miner and Pioneer"



Only about 60 stamps now known to exist.

THE Coolgardie Cycle Express Co.
 HUNT STREET,
 (Opposite Post Office)
SPECIAL CYCLE MESSAGES.

HAVING engaged the services of the following Special Cyclists—
 F. P. HORN, H. VYARON, F. W. WILSON, F. W. BRIDGMAN, W. H. HARRISON,
 J. H. C. BELLIE, &c, we are prepared to convey messages to any part
 of the Field, by day or night, at shortest notice.

Mining Notices put up on Claims, Wages Paid, Claims Pegged and taken up at
 Warden's Office, and all Mining Business transacted

Regular Cycle Mail leaves this office for *Hannans, (daily) Menzies, Norseman,
 Yerrilla, Pindarrie, Mt. Margaret, Newswan, Dundas, &c.*

JAMES A. HEALY, AGENT.
 N.B.—SPECIAL MESSAGES GUARANTEED.

6.5 LOCAL POSTS - GOVERNMENT SERVICE DISORGANISED - **CORALIT Italy 1945.**
 Ministry of Communications authorised **CORRIERI ALTA ITALIA (CORALIT)** 26 Feb 1945 to run cycle post



First issue of stamps, 2 values, March 1945

Second issue of 5 values issued mid March 1945. Values L.70 & L.140 show route Turin, Milan, Venice, Trieste. Designer: F. Grassi.

Registered letter, to Sicily, carried by CORALIT Service 14 lire per 10 gm, in addition to 2 1/2 lire stamps on front.



6.5 LOCAL POSTS - GOVERNMENT SERVICE DISORGANISED - CORALIT Italy 1945.

CORALIT service suspended 28.4.45. re-licensed by Administration of Posts/ Allied Military Government 21.5.45.



3rd Issue June 1945
Service ceased end of 1945

Right
Proof all
5 values.



NB Map on stamps shows towns from which service operated



Right

postal rate
1 Lire P.L.U.S.
56 Lire (2nd
series) for
CORALIT
Service

6.5 LOCAL POSTS - GOVERNMENT SERVICE DISORGANISED - S.E.I.S. & S.A.B.E. Italy 1945.

Società Espressi Italia Settentrionale (S.E.I.S.) delivered mail in Veneto, Lombardy & Emilia until June 1945.



5 stamps prepared June 1945, not used, service ceased.

Società Anonima Barbera Editore (S.A.B.E.) authorised 7 August 1945 for cycle postal service in Northern Italy



Regions shown on stamps.

Service ceased early 1946.



7. BICYCLE INFLUENCES AND DESIGN CHANGES

7.1 CYCLE INVENTIONS ADOPTED BY MOTOR INDUSTRY

Skills gained in manufacturing bicycles and tricycles extended to motorcycle and motor car production

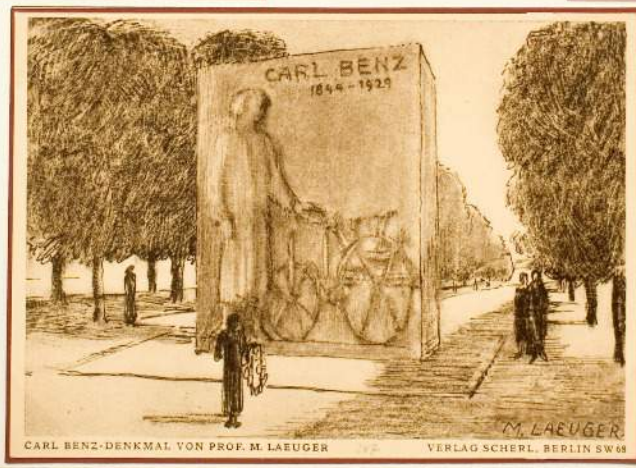


Early automobiles incorporated chain drives, differential gears & solid tyres used to make bicycles and tricycles



Carl Benz built car with single cylinder engine in 1886 and incorporated cycle chain drive.

De Dion Bouton motorised tricycle



CARL BENZ-DENKMAL VON PROF. M. LAEUGER

VERLAG SHERL, BERLIN SW 68

7.2 THE BICYCLE IN ART

The bicycle has been used as a subject by children and adult artists and has featured in sculpture also.



11 year old V Fick's Olympic Games drawing, with a bicycle.



Child's Christmas drawing of a bicycle with balloons attached.



"Spurt" Sculpture by Siegfried Schreiber.



Painting "Girls with Bicycles" by V. Kiliča.



"Bagong Taon", Arturo Luz



Right Leipzig Display of art sports theme

Below: Painting "Leisure Activities" by Fernand Leger (1881 - 1955)



7.2 THE BICYCLE IN ART

The bicycle as a subject extends into design, including Road architecture, in addition to appearing in Art Galleries.



Above 'Farmer's Holiday' Painting Gerasimov 1937.



St Etienne's Museum of Art & Industry in France

From Jersey Booklet June '96



Above: The sign painted on roads in G.B. for a Cycle Lane.

Below: Celebration 100 years of road signs & artistic design



Below Jersey's War time Occupation Tapestry includes cyclist with parcel.

One of the nicest things about motoring in Jersey is that you simply cannot hurry. By law, there's a maximum speed limit of 40mph throughout the island, with a 20 or 30 mph restriction through built-up areas. 15 mph in 'Green Lanes'. So sit back, take things easy and simply enjoy the view.

If you prefer two wheels to four, bicycles can be hired from several companies on the island, with prices around £6 per day for a

mountain bike.

The island slopes from north to south, with craggy cliffs in the north giving way to broad sandy bays along the southern shores. Most of the main roads run down the valleys, which makes navigation easy.

Fortunately even first-time visitors rarely stay lost for long. If all else fails, sooner or later they're going to hit the coast. Most people who choose an island holiday do

so because they like the sea. Or at least the beach. Jersey has plenty of both.

Two-thirds of Jersey's population live in St. Helier – the island's capital – which means the rest of the island is pleasantly rural.

Drive west from St. Helier and you take the seaford road around St. Aubin's Bay, over three miles of sandy beach with plenty of parking places if you fancy a swim.

But before you leave St. Helier, you'll find an hour well spent in the Jersey Museum at the Weighbridge. Re-opened in Spring 1992 after a major refurbishment, it provides an excellent introduction to the island, with lots of high tech hands-on attractions, plus some unique exhibits including bones of a woolly Rhinoceros dating back 200,000 years.

It was also the temporary home of the Occupation Tapestry, a spectacular set of twelve tapestry panels (one of each parish) depicting scenes of the occupied years in Jersey. The tapestry is now permanently housed on the New North Quay.



ONE PANEL OF THE JERSEY OCCUPATION TAPESTRY

7.3 DESIGN CHANGES

In 1962, building the Moulton cycle was the first serious attempt to replace the diamond frame design.



Moulton's rubber suspension on Mini led to his bicycle with suspension.



1990s carbon fibre racing frame



Above right: Cross frame mountain bike and (right) smaller frames with dropped top tube are popular with children.



Above: Proof signed by the artist.

interlaken
Switzerland
14.12.89
Human
Powered Vehicle
Weltmeisterschaft



CH - 1524
Mr Sole Brian
3, Stockfield Road
GB - Claygate Esh, KT1000G



Bicycle for the man about town, in future?

Below: The Easy Racer Gold Rush reached 105.37 km/hour.



7.3 DESIGN CHANGES - BMX and Mountain Bikes.

Bicycle Motor Cross (BMX) established in America in 1970 by young riders speeding around dirt tracks.



BMX and Mountain Bikes as popular as skate boarding etc.



Mountain Bikes have fat tyres, 15+ gears for off-road touring.

Below:
WHEELIES = front wheel in air



World Championships held and introduced in Olympic Games 1996.



CH -1430
Mr Sole Brian
3, Stockfield Road
GB - Claygate Esh, KT1000G (Engl.)

7.4 THE BICYCLE AT EXHIBITIONS

It was not long after the invention of the bicycle that exhibitions of cycles began to be held, in many countries.

Visit the Car and Bicycle Exhib'n in Brussels from 8 - 19 Jan 1938.



International Bicycle & Car Exhibition, Frankfurt 21-28 Oct '58.



Visit the car and Bicycle Exhibition in Brussels 11-22 Jan 1939.

Below Bicycle Exhibition Leipzig 1899. Note handstamps PORTO (Postage) in red and "20" in blue (min rate). Right corner repaired.

