

3.2 IMPORTANCE OF ROAD SAFETY - Extra care needed by cyclists.

Cyclists are the most vulnerable of road users; need to obey road signs and give clear signals.



Error. Left normal, right printed on gum side



N.B. cachet above "cyclists ride on the right and in single file".



Road signs must be obeyed

Clear hand signals essential



Use of cartoon characters can be an effective way to emphasise road safety.



3.2 IMPORTANCE OF ROAD SAFETY - Helmets help to reduce injuries.

Young cyclists especially are being encouraged to wear helmets to reduce the chance of head injury.



Cycle helmets made in various shapes, sizes and colours



Cyclist is Raymond See, Philippines, designer of postmark.



Track cyclists first to wear crash helmets



Peaked cap is sun shield only



3.2 IMPORTANCE OF ROAD SAFETY - Motorists need to take care near cyclists.

All motorists need to take special care when approaching and overtaking a cyclist on the road.



Cyclists and children are equally at risk



Cyclists can be frightened by lorries driving too close.
First day of issue of stamp and slogan 'Driver mind that bike'



Motorists often unaware how close car is to cyclist



Above: Meter mark used by Insurance Company, warning policyholders to look out for cyclists.

Below: Motorists should look out for hand signals by cyclists, and be prepared for sudden moves by cyclists.



3.3 NEED TO SECURE AND INSURE A BICYCLE.

A bicycle is a valuable item and the owner should take care to protect it from loss or theft.



Left: See Slogan "Bike left Bike theft"

Right: Scene from the Italian film "Bicycle Thieves"



A bicycle should be secured with a strong padlock when left by owner.



Insurance cover should always be arranged for a bicycle, in addition to taking normal precautions.



3.4 OPPORTUNITIES CREATED BY SAFETY BICYCLE - general use

The bicycle is used for a variety of purposes by both children and adults and can be ridden on roads and pathways.



Above Bicycles were a feature of street scenes by the end of the nineteenth century.

Below Modern scene of cycle tourists riding in a Park - Singapore 35c aerogramme.



Above Use in town and seaside

3.4 OPPORTUNITIES CREATED BY SAFETY BICYCLE - Greater freedom of movement

The bicycle encouraged contact between neighbouring villages and city workers to visit the country at weekends.



The Industrial Revolution from 1870 onwards changed the Western world from a rural to an urban basis.



The bicycle was a means of escape to the country for the workers in industrial towns.



Even today the bicycle provides healthy exercise at the weekend for town workers in places such as Japan with high populations.

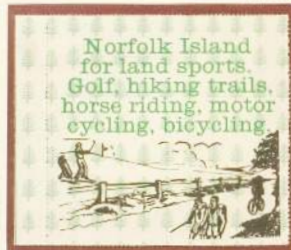


3.4 OPPORTUNITIES CREATED BY SAFETY BICYCLE -exploring the countryside.

The bicycle provides cheap way of exploring countryside, best to decide route beforehand by consulting map.



This lone cycle tourist is enjoying smoking a pipe!



Back of 1975 free form self adhesive stamp "150th anniversary of 2nd settlement"



Map reading essential.



Below cachet reads "Prepare for 4th cycle rally 26 & 27 August"



A camera may prove very useful to capture that unexpected moment



3.4 OPPORTUNITIES CREATED BY SAFETY BICYCLE - Along trails.

The bicycle can be used to travel in areas and along many paths which are not always open to vehicles.

Cyclists can ride along canal paths (below)



along railway pathways (below) and the sea shore (below right)

Kingdom of Fife Cycle Ways, promoting cycling as part of daily life, encourages cycling to shops, school or work



Below: 430 mile Pennine Trail is used by walkers, cyclists & horse riders.

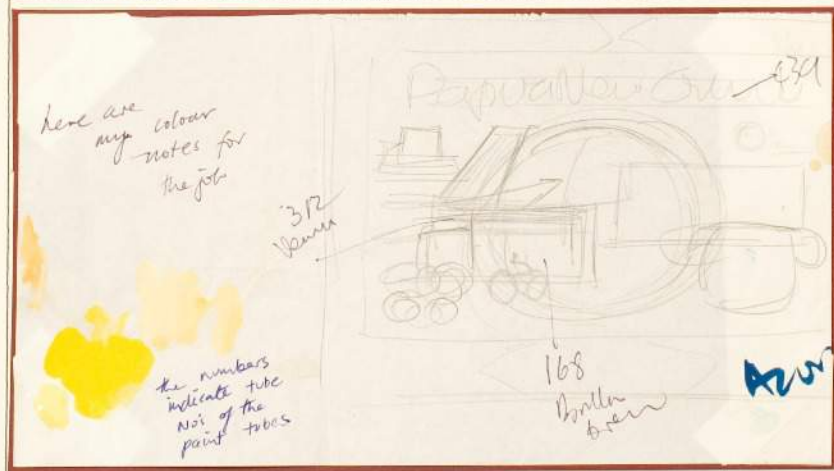


3.4 OPPORTUNITIES CREATED BY SAFETY BICYCLE - Cheap travel around town.

Preliminary rough drawing and colour notes by Graham Wade, designer of Papua New Guinea stamp.



See comment by G.Wade, "the bike wasn't on the preliminary rough IT WAS A MOMENT OF INSPIRATION as I did the small rough"



3.4 OPPORTUNITIES CREATED BY SAFETY BICYCLE - Reliability trials.

Arthur Richardson rode 600 miles over Nullarbor Plain in 1896, demonstrating potential for long distance cycling.

Below. Copy of official approval by Australia Post to use P.P.I. PLUS, handwritten note by G.Wade, explaining cover on right.

Australia Post

POSTMASTER
- 4 JUL 1985
WAHROONGA 2076

Mr. G. Wade
Normanville

Dear Customer,

Approval is given for you to use the Postnet Paid Imprint facility at the office(s) listed below, subject to the conditions shown overleaf. A specimen of the approved imprint is shown below.

Should you desire to vary the approved imprint, another application is to be made.

Yours faithfully,

G. Wade Postmaster/Manager

Posting Office
WAHROONGA 2076
NORMANVILLE 2076

Approved imprint to be affixed here

Posting Conditions

- Lodgements are to be made at the counter of the approved office(s) and:
 - May be paid for in cash at the time of posting or lodged under a specially approved Charge Account System.
 - Should be arranged so that articles of the same dimension (other than parcels which should as far as possible be grouped to appropriate mass categories) are bundled together in groups of 10 or multiples of 10, or, as required by the office of lodgement.
- Except in the case of Registered Publications, the following minimum quantities apply:

	Cash	Charge Account
parcels -	10	10
articles other than parcels -	50	20
- If lodgements are made after 3:00 p.m. or, less than 2 hours before the closing time of the appropriate outgoing mail despatcher, the articles may be delayed.

PM122 (Rev. 1 Feb 78)

Notice Bulk mail bears no postmarks but each of these has been via the AP Mail Services



Below. Proof, signed by Graham Wade.



3.4 OPPORTUNITIES CREATED BY SAFETY BICYCLE - Reliability trials.

Arthur Richardson rode 600 miles over Nullarbor Plain in 1896, demonstrating potential for long distance cycling.

Below: Copy of official approval by Australia Post to use P.P.I. PLUS, handwritten note by G. Wade, explaining cover on right.

Australia Post

POSTMASTER
- 4 JUL 1985
WAHROONGA 2076

Mrs. G. Wade
3 *Quincey Ct.*
Noranda

Dear Customer,

Approval is given for you to use the Postage Paid Imprint facility at the office(s) listed below, subject to the conditions shown overleaf. A specimen of the approved imprint is shown below.


Should you desire to vary the approved imprint, another application is to be made.

Yours faithfully,

[Signature] Postmaster/Manager

Posting Office
WAHROONGA 2076
NORANDA 2076

Approved imprint to be affixed here



Posting Conditions

- Lodgements are to be made at the counter of the approved office(s) and:
 - May be paid for in cash at the time of posting or lodged under a specially approved Charge Account System.
 - Should be arranged so that articles of the same dimension (other than parcels which should as far as possible be grouped in appropriate mass categories) are bundled together in groups of 10 or multiples of 10, or, as required by the office of lodgement.
- Except in the case of Registered Publications, the following minimum quantities apply:

	Cash	Charge Account
parcels -	10	10
articles other than parcels -	50	20
- If lodgements are made after 3:00 p.m. or, less than 2 hours before the closing time of the appropriate outgoing mail despatches, the articles may be delayed.

PH132/Book 1 (Feb '79)



Below: Proof, signed by Graham Wade.



3.4 OPPORTUNITIES CREATED BY SAFETY BICYCLE - Keeping healthy.

Regular cycling, combined with healthy food and recreation, helps keep a person fitter.

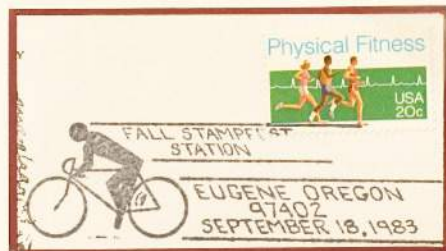


exercise by cycling will never strain a normal heart.



Best to avoid smoking.

Note tab "exercise regularly"



Cycling does not stretch the muscles; other activities do this.

Below, right: cycling helps reduce high blood pressure

Children keep fit by cycling. (self adhesive stamps)



Below: An exercise bicycle can be used indoors during the winter and to keep muscles supple at other times.



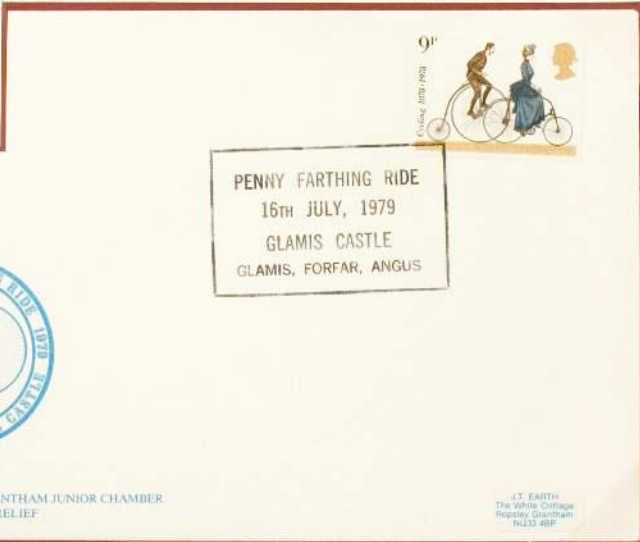
3.4 OPPORTUNITIES CREATED BY SAFETY BICYCLE - raising money for Charity.

The bicycle is a means to raise money for charitable causes and can involve cycling long distances.



Left Dutton Forshaw (d) mechanics raised money for a kidney machine

Above 10 Royal Mail staff cycled 140 miles to Sunderland for Special Baby Unit fund
Below 4 National Assn. of Veteran Cyclists' members rode from London for cancer relief



PENNY FARTHING RIDE
16TH JULY, 1979
GLAMIS CASTLE
GLAMIS, FORFAR, ANGUS

ORGANISED BY GRANTHAM JUNIOR CHAMBER
IN AID OF CANCER RELIEF

J. T. EARTH
The White Cottage
Rectory Grantham
Notts NG33 4BP

3.5 CYCLE TOURING - Uniforms

From the 1880s cyclists took the opportunity to join Bicycle Clubs and adopted a standard uniform.



The recommended uniform of male Club cyclists in 1880s was tight knickerbockers high boots and jacket with no flaps or frills

Ladies continued to wear most unsuitable garments and hats to comply with fashion of day.



See below. Advertisements on the back of Gothenburg Local Post stationery envelope (front reduced).



Aktiebolaget Göteborgs Frimärks-Affär
(The Gothenburg Stamp Co., Lim.)
Norra Hamngatan 2, Göteborg.

Assorted stock of all kinds of postage stamps at lowest prices. **Frimärks-Album** såväl som tillbehör till billiga priser. **Sportartiklar** såsom Lawn Tennis, Fotboll, Cricket, Velocipeder m. m. säljes billigast i parti och minut af R. W. LINDHÉ, GÖTEBORG General-Agent för Sverige.

Söderbloms Flyttbara Kaminer
af nyaste fabrikade konstruktion säljes billigast af R. W. Lindhé
Norra Hamngatan 2 GÖTEBORG.

F. WILH. JOHANSSON
1:a Långgatan Nr 4, (Filtel): Skeppslådan No 1) Sjögelmakare. Flagg- & Kompassfabrikant i förening med Skeppsfournöringsaffär. Bell och Silmans Telefon.

S. J. LINDSKOG
2:a Långgatan 50 GÖTEBORG.
Stort lager af Herre-, Dame- och Barnskodon. Reparationer af allt hvad till yrket hör.

Adolph Meyer & Co.
GÖTEBORG
Lampor: Lampglas Vekar & öfriga Lampstillbehör till extra billiga priser.

VICTOR KROOK VARBERG SPEDITÖR.
Billig och prompt expedition.

område för 3 öre af Göteborgs Privata Lokalt post.

Göteborg. D. F. Rönneri Boktryckeri, 1980.



Advert on back of New Zealand 1d pink stamp

← 1888
R W LINDHÉ
advertisement.

Clothing manufacturers quick to realise sales potentials in fast growing field of cycling

3.5 CYCLE TOURING - uniforms

Gradually more suitable and more comfortable clothing worn by male and female cyclists.



Some men continued to wear hats.



Cycling more sedate in early 20th century.



Holland flat but has high winds.

Below: Swedish booklet cover printed offset and frame is 39mm high.



Today's cycle tourists also ride lighter bicycles and are encouraged to wear helmets for safety



copy of reverse of card, reduced

3.5 CYCLE TOURING - Overnight accommodation

The Youth Hostels Association provides cheap and clean overnight accommodation for walkers and cyclists.



Right

"An Oige" is Irish for Youth Hostel.



The YHA was founded in 1931, with a contribution from the Cyclists' Touring Club.



After a hard day's ride a night's rest is welcome.

The German equivalent of YHA is DJH.



Left: Australia has Youth Hostels



Below: Time to study the map



Membership of YHA allows access to Hostels in other countries



Note the use of panniers to carry clothes & spare equipment.