



Go by cycle!



INTRODUCTION

Karl von Drais' 1818 crude invention; a plank of wood with 2 wheels attached, led to the start of an industry. The arrival of the diamond frame safety bicycle led to a surge in manufacturers, and users for leisure pursuits, including racing, and utility purposes in war and peace. The bicycle has had wide influence in art and design.



British Greetings Telegram used on First Day of Issue: Artist Rowland Emmet.



Go by cycle!



Chapter	INTRODUCTION AND PLAN	Pages	Chapter	Pages	b/f	96
1. EARLY HUMAN TRANSPORTATION.		13	4.2 Track Racing.			
1.1 Means of transport before the first velocipede.			4.3 Road Racing.			
1.2 Arrival of the first "running machine".			4.4 Cyclo-Cross.			
1.3 First attempts at lifting feet off the ground.			4.5 Games and Championships.			
1.4 Desire for speed led to larger front wheel.			4.6 Stage Races.			
1.5 Alternative experiments with tricycles.			5. THE BICYCLE AT WAR.			8
1.6 Other types of cycle - tandems and unicycles.			5.1 The Boer War 1899-1902.			
1.7 Terms used to describe the 2 wheel machine			5.2 The First World War 1914-1919.			
2. DESIGN & MANUFACTURE OF SAFETY BICYCLE.		25	5.3 Between the Two World Wars.			
2.1 Early types of safety bicycle.			5.4 The Second World War 1939-1945.			
2.2 Manufacturers of diamond frame safety bicycles.			6. DELIVERY OF MAIL BY CYCLE.			18
2.3 Anatomy of the safety bicycle.			6.1 The Delivery of Ordinary mail.			
3. USE OF THE BICYCLE FOR LEISURE PURSUITS.		32	6.2 The Delivery of Special mail.			
3.1 Enjoyment of the Bicycle starts from an early age.			6.3 The Delivery of Parcel mail.			
3.2 Importance of Road Safety.			6.4 Authorised Local Posts.			
3.3 Need to secure and insure a bicycle.			6.5 Local Posts- govern'm't posts disorganised.			
3.4 Opportunities created by safety bicycle.			7. BICYCLE INFLUENCES & DESIGN CHANGES.			6
3.5 Cycle Touring.			7.1 Cycle inventions adopted by Motor industry.			
3.6 Cycling Organisations.			7.2 The Bicycle in Art.			
4. THE RACING CYCLISTS.		24	7.3 Design Changes.			
4.1 The Early Years - End of 19th century.			7.4 The Bicycle at Exhibitions.			
		c/f				96
			TOTAL			128



1 EARLY HUMAN TRANSPORTATION

1.1 MEANS OF TRANSPORT BEFORE THE FIRST VELOCIPÈDE.

Prior to the age of the velocipede (bicycle), transport was by horse or animal drawn vehicles.



Confucius in ox-drawn cart. (2540th Birth Anniversary of Confucius.)



Horse and cart was a common means of travel in 19th century. (Commonwealth of Australia Letter Card, One Penny postage)



1.1 MEANS OF TRANSPORT BEFORE THE FIRST VELOCIPÈDE.

Other methods of transportation followed the invention of the steam engine, leading to steam boats and railways.

Below: The Caledonian Steam Packet operated from 1869. In use 1 day.



Below: The Midland Region London Extension ran from 1868. Slogan in use 11-13 Oct 1968.



Stephenson's "Rocket" attained a speed of 47kph in 1829, winning a prize from the London and Manchester Railroad.



America invented the 'Cowcatcher' on the front of engines.

Note Plate 2



Switzerland's railway systems commenced in 1847, before the bicycle was used on the roads.

1.2 ARRIVAL OF THE FIRST "RUNNING MACHINE"

In 1818, Baron von Drais of Karlsruhe, agricultural engineer and inventor, patented his "Laufmaschine", in Paris



Karl von Drais was born 29 April 1785

The Laufmaschine or running machine had a heavy bar linking 2 wheels in line, heavy iron forks, a saddle on the bar and was propelled by pushing feet along the ground



1.2 RUNNING MACHINE Improvements

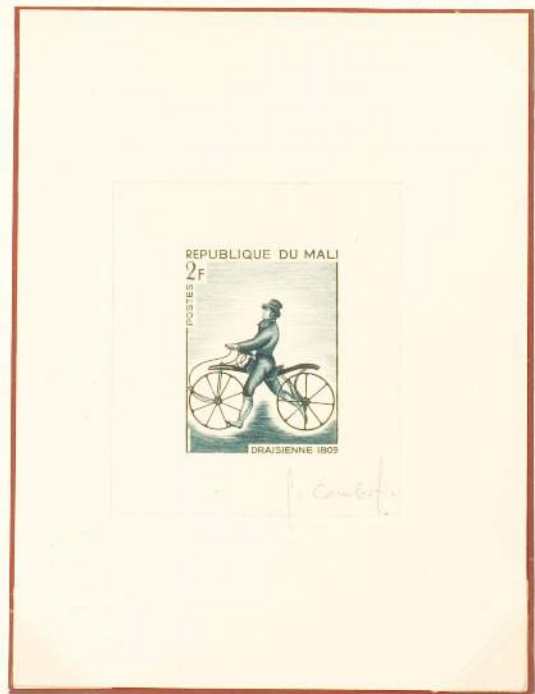
Denis Johnson, Coachmaker, of Covent Garden, also patented his "Pedestrian Curricule or Velocipede" in 1818



Called the Hobby or Dandy Horse; young men showed off to ladies, when riding it.



Proof, colour trial and issued stamp. "Draisienne" was name used for von Drais' Laufmaschine BUT this is Johnson's model of 1818 NOT 1809



1.3 FIRST ATTEMPTS AT LIFTING FEET OFF GROUND - FRONT WHEEL DRIVE (CONT.)

Commercial success of the Michaux velocipede led to many models being built, known as "Boneshakers"



N.B. "broken wheel" error
AND no cranks or pedals.



early use for cycle touring



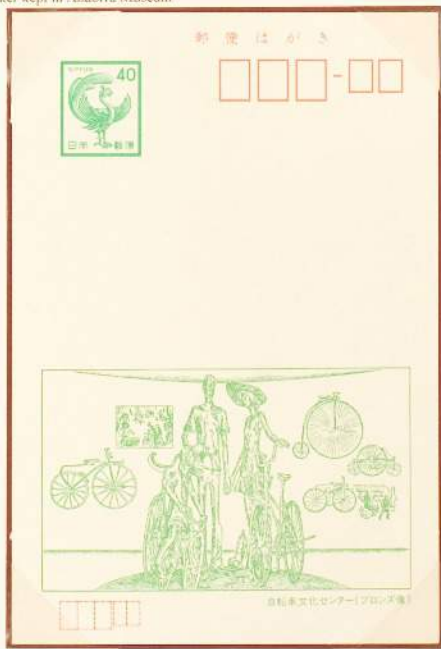
Boneshaker kept in Andorra Museum



Unlikely that a lamp would
have been used on machine.

Right - Boneshaker on left, among
variety of 2 and 3 wheeler machines.

Below - Proof of cover of 10p booklet

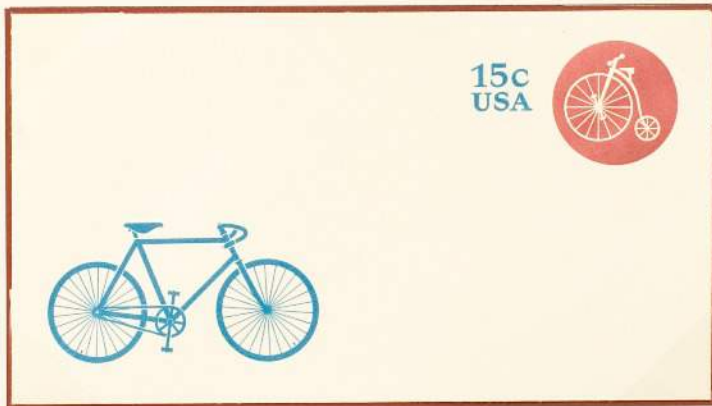


1.4 DESIRE FOR SPEED LED TO LARGER FRONT WHEEL - THE HIGH or ORDINARY BICYCLE

The larger front wheel enabled a greater distance to be travelled with one revolution of the pedals.



Left:
1869 - Year
a 48" wheel
first built
N.B. Plate 3



Above:
The safety
bicycle led
to the end
of the high
bicycle.

The foreign post-
card rate from
1.7.1875-1.4.1879
was also a penny
farthing and co-
incided with the
growth in the
popularity of
the high bicycle.



Below:
The Crypto-Bantam
of 1893, had a gear
mechanism in front
wheel hub, for use
by older riders.



1.4 THE HIGH or ORDINARY BICYCLE

The High Bicycle was ridden by mainly young athletic men, often attired in a uniform.



The more disrespectful cyclists rode through villages at speeds which frightened the locals.

Below Slogan in use 14-26 Aug '78



Mr. E. J. Goodman,
31, Bluett Road,
London Colney,
ST. ALBANS, Herts.
AL2 1RN



Below:
The derogatory term for the High Bicycle was 'Penny-farthing', or 5 farthings, 1880
Foreign Post Card rate in Heligoland.



1.5 ALTERNATIVE EXPERIMENTS WITH TRICYCLES

The popularity of the tricycle waned at the end of the 1890s; the safety bicycle was lighter and easier to ride.



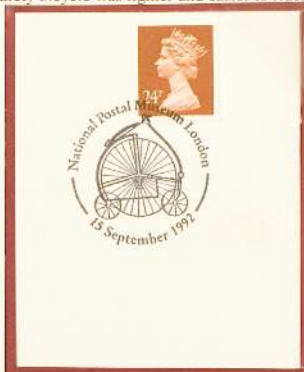
4th Convention of German Cyclists' Federation, 1887.

Rude Rotary tricycle large wheel driven by chain, steered by stirrup handle, popular 1878-88



Right: Special hs used at National Postal Museum on day of issue of p.c. of Horskam's five wheel Centre cycle for parcel delivery in the 1880s.

Left: Front reduced Below: Advert. for the Humber Cripper



P. LERISSEL
EBENISTE. CONSTRUCTEUR BREVETÉ
D'APPAREILS POUR LA PHOTOGRAPHIE
SPECIALITE DE CHARGES NOIRES
ET ACCESSOIRES POUR TABLES ET PHOTOGRAPHES
24, Rue de Charleton, PARIS.
Brevet du Catalogue sur demande
Commission - Exposition

MARC JANDARD
Fondéur E&F de VIE de MARC distillé par procédés particuliers
A. JANDARD
Distillateur à Romandzé-Thiers (Saône-&-Loire)
Vins de Beaujolais et de Mâconnais

BONNET
Appareils pour l'Electricité
ET TÉLÉPHONE
170, Rue Pelleport. - PARIS.

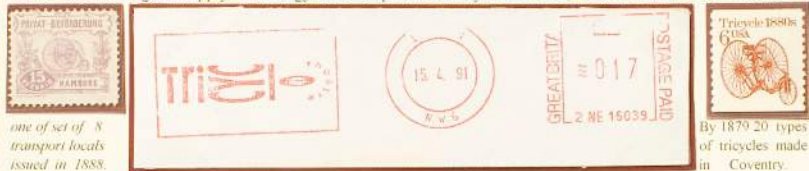
P. BOULANGER
Avenue de Neuilly, 18
Tous les modèles de bicyclettes
BICYCLES, TRICYCLES
Neufs & d'occasion
Location
VENTE - ACHAT - ECHANGE
Atelier spécial de Réparations

MANQUE DE FORCES
à l'usage des personnes âgées et fatiguées
le FER BRAVAIS
Reconstitue le sang des personnes âgées et fatiguées.
40 Rue de Valenciennes, PARIS - France - Le Bravais

Cie Pharmaciens-Chimistes de première classe
cotevard de Strasbourg, PARIS
ICE et POMMADE du Docteur SAÏDI.
PILULES BARIC
EN contre les cors et durillons.

1.5 ALTERNATIVE EXPERIMENTS WITH TRICYCLES

Manufacturers began to apply technology to development of tricycles c. 1876, ridden to limited extent before.



one of set of 8 transport locals issued in 1888.

By 1879 20 types of tricycles made in Coventry.

Tricycles were used by postmen in Vienna in 1888.



Right - Salvo Tricycle

Queen Victoria asked J. Starley to deliver 2 Salvo trikes to Osborne House, on Isle of Wight, 1881, then called Royal Salvo.

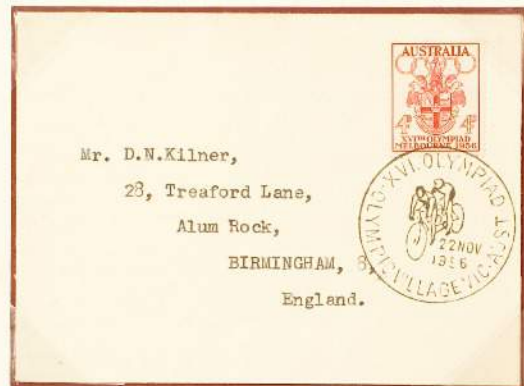


Below, Cancel "OSBORNE I. OF WIGHT" issued by Post Office to Royal Household in 1897.



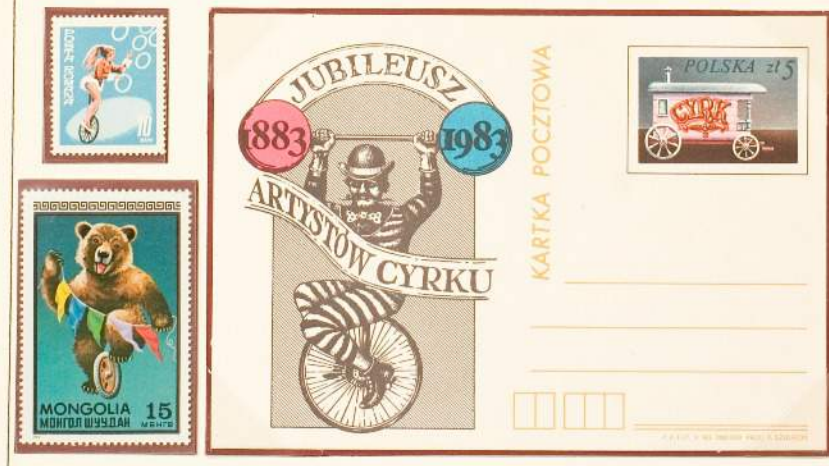
1.6 OTHER TYPES OF CYCLE - TANDEM BICYCLES AND UNICYCLES.

First tandem bicycle made in 1886. Still ridden for touring and racing but has never achieved great popularity.



1956 2000m tandem Olympic event won by Brown & Marchant of Australia.

Unicycles ridden in the circus by men, women and animals, but little use elsewhere



1.7 TERMS USED TO DESCRIBE THE 2 WHEEL MACHINE

Ordinary Bicycle' evolved from 'Velocipede'; became the 'Ordinary' when 'Safety Bicycle' called 'Bicycle' c.1896.



Ordinary (or High) bicycle

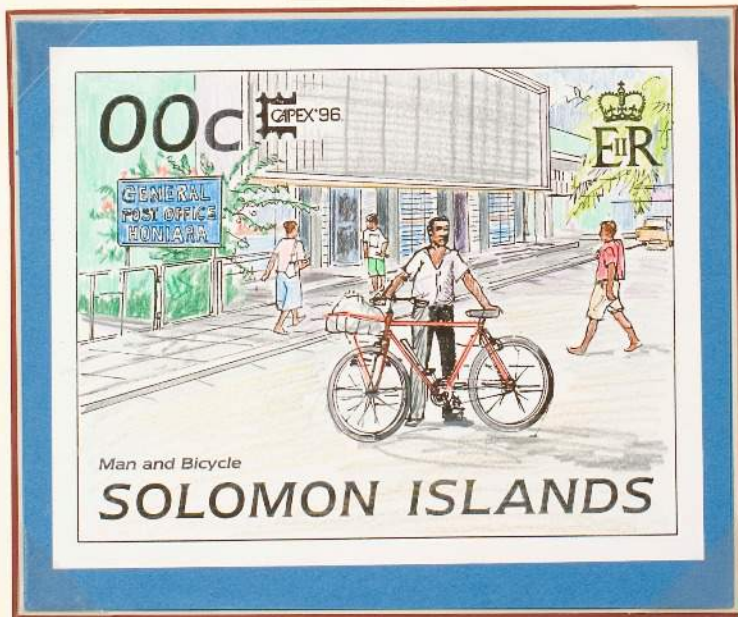


SOLOMON ISLANDS



ABOVE: The BICYCLE Post Office USA open from 22 Nov. 1916 to 31 Oct. 1935.

ABOVE: Velocipede at top and Bicycle below.
BELOW: Artist's drawing, stamp issued 8 Jun 1996.



2 THE DESIGN AND MANUFACTURE OF THE SAFETY BICYCLE

2.1 EARLY TYPES OF SAFETY BICYCLE

The change to rear wheel chain drive enabled the wheels to be smaller but gave a rougher ride, at first.



Rear wheel chain-drive used first on John Kemp Starley's 1885 ROVER Safety bicycle.



<p>Registered Stockist Registered No. 108,475</p> <p>J. A. C. MACDONALD, Pianoforte Agent, 42, MURIAL STREET, BARNSBURY, N.</p> <p>Pianos supplied, by the Best Makers, on the Hire System, from 10/6 per month.</p> <p>NO DEPOSIT REQUIRED.</p>	<p>LIVERPOOL Telegraphic Address—"COLONIAL," LIVERPOOL.</p> <p>RICHARD RUSSELL, Stock and Share Broker, 39, STANMORE STREET, LONDON.</p> <p>Special Business in Railways, Banks, Brewery, and South African Mining Shares.</p> <p>Inventory desirous of making large profits can have particulars of Shares certain of a great rise in price—immediate application necessary.</p> <p>DRAYTON PARK HOTEL, HIGHBURY Fines-dinner accommodation. A splendidly furnished Billiard Saloon (2 Tables), by best makers—JAMES BOWLER.</p>	<p>TO EARN MONEY In your spare time. Send Post Card to Solicitors, Terms, and Price. Sample of Post Card Enclosed.</p> <p>One Penny Pink envelope and adverts. 12th London issue 21.11.89.</p>
<p>Wanted—An Endurable Pen. LONG NEEDED—COME AT LAST! THE SELF-REGULATING AMERICAN As flexible as GULL. In use. Careless. As good as GULL. I and write as smooth as a Lead Pencil. As new as GULL.</p> <p>PENS.</p> <p>One Pen lasts as long as a real quill pen. We would want you to try them, so feel free to write them. The Waterbury Pen is superior, and is cheap and easy to use with a piece of writing paper tucked and clipped in front which will insure break and leak proof to a new one. Price 4d. each, 5p. per dozen.</p> <p>A special Empire, made-London, Exhibition, 1883.</p> <p>For Sale Wholesale and Retail only.</p> <p>J. W. HAWKINS, 42, MURIAL ST., BARNSBURY, LONDON, E. N. Large Trade Discount. Local Wholesale.</p>	<p>IF YOU WANT A BICYCLE, TRICYCLE, TANDEM OR SAFETY.</p> <p>We have on hand a Great Variety of New and Second-hand Machines. Bicycles from 20/-, Safety's 25/-, Tricycles 15/-, Lamp 25/-, Bells 25/-, Pedals plain 4/6 pair, pocket bell, 10/6, enamel 2/6.</p> <p>EAST LONDON CYCLE STORES, 11, QUEEN STREET, TOWER HILL, LONDON.</p>	<p>TO EARN MONEY In your spare time. Send Post Card to Solicitors, Terms, and Price. Sample of Post Card Enclosed.</p> <p>One Penny Pink envelope and adverts. 12th London issue 21.11.89.</p>
<p>Messrs. J. G. ELLIOTT & WATSON, Fruit and Potato Salesmen, 53 & 54, LEADENHALL MARKET, & LONDON HOUSE YARD, ST. PAUL'S, E.C.</p> <p>Hotels, Restaurants, and large concerns supplied at Market Prices. Particulars to City Companies.</p> <p>Large Establishments visited every day—distance no object.</p>	<p>TOWER TEA</p> <p>SOLD IN EVERY TOWN AT LONDON MARKET RATES.</p> <p>PRIOR 1/4, 1/8 and 2/- per lb.</p> <p>Every Packet bears the above Registered Trade Mark, and is signed "Tower Tea."</p> <p>GUILDHALL CYCLE CO. LONDON, E.C.</p> <p>Largest Dealers in the City.</p> <p>Open 9 a.m. to 9 p.m.</p>	<p>N.B. Dan Albone's cross-frame IVEL 95 shillings, at Guildhall Cycle Co and Bicycles from 20 shillings (£1) but Safety's £5, E. London Cycle Stores</p> <p>Lawson's "Bicyclette" was first safety machine, patented 1879</p>
<p>CUBA COMBES 1899 30</p> <p>IN PROSPERIDAD DE LA BICICLETA</p>		